

SUSHI EATERY

JAPANESE BUFFET

Sun - Thu: £23.80 per person Fri, Sat, Bank Holiday: £24.80 per person



BUTTERFISH SASHIMI



TUNA SASHIMI



SALMON SASHIMI



SALMON NIGIRI



SOFT SHELL CRAB ROLL



CALIFORNIA ROLL



SALMON MAYO ROLL



SPICY SALMON ROLL



CHICKEN KARAAGE



DEEPFRIED CHICKEN KATSU



GRILL CHICKEN FILLET IN SKEWER



JAPANESE SPRING ROLL(V)



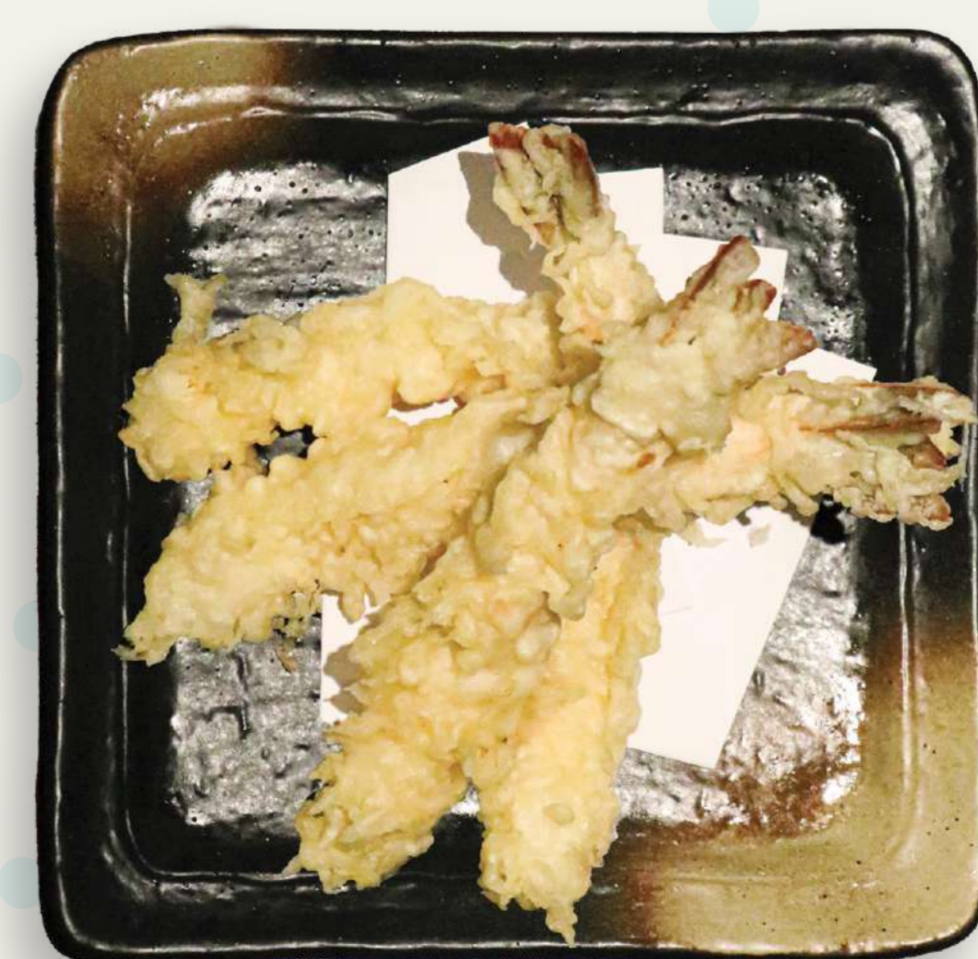
TOFU STEAK(V)



SWEET POTATO TEMPURA(V)



VEGETABLE GYOZA(V)



KING PRAWN TEMPURA



MIX VEG TEMPURA(V)



BEEF TERIYAKI



MIXED GREEN SALAD
IN CITRUS DRESSING(V)



EDAMAME(V)



SPICY TANTAN NOODLES



MISO SOUP(V)

CHEF'S SPECIAL SELECTION SUSHI BOX

(FOR TAKEAWAY ONLY)



6PCS SALMON SASHIMI,
4 PCS SALMON NIGIRI,
3 CHEF SELECTION MAKI ROLL (18 PCS)



4 PCS SALMON SASHIMI,
2 PCS SALMON NIGIRI,
2 CHEF SELECTION MAKI ROLL (12 PCS)

*Discretionary gratuities suggested at 10%.

*Please advise of any dietary requirements or allergies and our chef will be delighted to assist.